

Welcome to the West Area Planning Committee

- This planning committee meeting is held in public but it is not a public meeting.
- There will be an opportunity for the public to address the committee on each application.
- If you wish to speak for or against a planning application, you need to have either requested it in advance, or hand in one of the available speaker forms, or speak to the clerk.
- Information on meeting protocol and conduct at the committee is set out in the Code of Practice.
- This is in the committee agenda just before the first planning application report.



14/03255/FUL





Ground Floor Plan
1:200



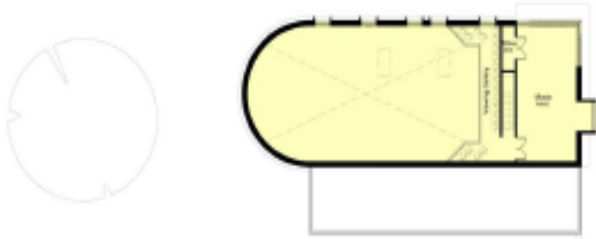
Basement Plan
1:200



Second Floor Plan
1:200



First Floor Plan
1:200



REV A - 22/01/2015	
Hall Repositioned	
G Overbrook's College	18/11/14
330 Barbary Road	1:200
Floor Plans - Proposed	P25A



Banbury Road Street Elevation
1:250



South Facing Elevation
1:250

27

North Facing Elevation Windows

1st Floor Laboratory Windows to have obscured glass up to 1.8m above floor level to prevent overlooking.

1st Floor Offices to have projected timber boxes which allow for views to Banbury road and restrict views to neighbour's gardens.



North Facing Elevation
1:250



Capel Close Street Elevation
1:250

REV A - 22/01/2014	Full Repositioned	
12 Overbrook's College	18/11/14	1:250
333 Banbury Road	20140504	
Site Elevation - Proposed	PDA	

Design Statement

6.3 Appearance - Elevations



Banbury Road Street Elevation



South Facing Elevation

North Facing Elevation Windows
1st Floor Laboratory Windows to have obscured glass up to 1.8m above floor level to prevent overlooking.

1st Floor Offices to have projected timber boxes which allow for views to Banbury road and restrict views to neighbour gardens.



North Facing Elevation



West Elevation
1:200



East Elevation
1:200



North Facing Elevation
1:200



East Elevation
1:200

Materials
The walls of the new building will be finished in a light multi-coloured brick with fine pre-cast concrete detailing. The roofs will be finished in a dark grey zinc sheet material.



South Facing Elevation
1:200



REV A - 22/01/2016	
Hull Repositioned	
41 Overbrook's College	18/11/14
	1:200
330 Bursary Road	201405A
Buildings - Proposed	P016

6.3 Appearance - Elevations & Aerial View



6.3 Appearance - Perspectives

31

View from Front Lawn to Entrance



View from West Lawn to Villa



6.3 Appearance - Perspectives

32

View from Front path to central courtyard



View from Front Lawn to Entrance



RESIDENTIAL ESTATE AGENTS
SOLD
JOHN D WOOD
S.C.O.
01865 311522
john@jdw.co.uk
jdw.co.uk

333
←
ENTRANCE



33

34



35



36







38





40



This foundation stone was laid by

R.W. Bro. G.M. REDMAN-BROWN

Provincial Grand Master for Oxfordshire

at the start of work on the extensions

2 x 1985

THE FOUNDATION STONE
FOR THIS EXTENSION
WAS LAID BY
RW Bro. G.M. REDMAN-BROWN
PROVINCIAL GRAND MASTER
ON 3RD OCTOBER 2001





45



46





P Max. 2h
0.4m - 4.0m
Permit holders only B